



CASTORCRETE®
Sustainable Urethane Modified Concrete



Engineered for easy installation.

CASTORCRETE®

A Unique Line of Urethane Cement Mortar

CASTORCRETE® is designed for use in the most demanding food and beverage processing areas where high resistance to impact, abrasion and chemical resistance to organic food acids is required. CastorCrete is formulated with renewable raw materials and contains no VOCs, making it a viable option for environmentally friendly projects. It offers exceptional thermal shock resistance and is available with an anti-microbial additive to inhibit the growth of bacteria and microorganisms.

Not only is CastorCrete durable and environmentally friendly, but it was also designed to address limited work time. This is a common industry problem that often occurs during the installation of polyurethane concretes. In response to this, we developed two formulations of CastorCrete. Our Fast Cure formulation was designed for installations that require a quick turnaround. Our Regular Cure formulation offers more work time and a slower set time which equates to a much easier installation and better overall aesthetics of your finished flooring system.

Features & Benefits

- ✓ Moisture Tolerant
- ✓ Longer Work Time
- ✓ Thermal Shock Resistant
- ✓ Anti-Microbial
- ✓ Exceptional Chemical Resistance
- ✓ All Systems Available in Fast Cure Formulation
- ✓ All Systems Available in Regular Cure Formulation

Benefits of Urethane Mortar vs. Epoxy

The physical properties of urethane mortar systems are far superior to that of epoxy systems when it comes to specific applications such as heavy-duty industrial food processing, pharmaceutical manufacturing facilities, breweries or meat, fish and dairy processing plants. Below is a list of attributes where urethane mortar excels over epoxy.

- Withstands heavy abuse
- Very low odor
- No risk to open food products
- Impervious to radical temperature changes
- Withstands extreme temperatures

Products & Systems Overview

CASTORCRETE BIO FLOOR HDF/HDQ

CastorCrete Bio Floor HDF/HDQ has been engineered as a 100% solids, low odor, low VOC, hybrid flooring system consisting of our CastorCrete SL urethane cement slurry mortar, topped with an epoxy decorative acrylic vinyl flake system or an epoxy colored quartz system. The typical system thickness is 3/16 inch (4.8 mm) to 1/2 inch (12.7mm) thick. This system is thermal shock resistant, impact and abrasion resistant, moisture tolerant and UV stable. It offers superior life cycle advantages and can contribute to LEED certification.

Common Applications

- Biotech/Pharmaceuticals
- Animal & Institutional Research Facilities
- Wet/Dry Processing Areas
- Clean Rooms
- Food & Beverage Processing



Animal & Institutional Research Facility



Food & Beverage Processing Facility



Commercial Kitchen



Tech Giant

CASTORCRETE RT SYSTEM

CastorCrete RT is a heavy-duty urethane cement mortar applied with a rake and trowel. It's designed to protect existing concrete or resurface moderately deteriorated concrete. It can withstand extreme physical exposure including steam cleaning, heavy traffic and heavy impact. Additionally, this system has outstanding chemical resistance to most solvents, acids, alkalis, hot oils and animal by-products while withstanding constant temperature exposures up to 250°. This system is typically installed at $\frac{3}{16}$ inch (4.8 mm) to $\frac{1}{2}$ inch (12.7mm) thickness.

Common Applications

- Pharmaceutical Manufacturing
- Food & Beverage Processing

CASTORCRETE RT-B/RT-CQ SYSTEM

CastorCrete RT-B and CastorCrete RT-CQ are heavy-duty urethane cement mortar systems applied with a rake and trowel. They are designed to protect existing concrete or resurface moderately deteriorated concrete, while also offering options for a decorative appearance and/or slip resistance with the use of broadcast quartz or silica sand. They can withstand aggressive physical exposure to heavy duty abrasion and impact, thermal shock and thermal cycling, steam cleaning, heavy traffic and forklift traffic.

Additionally, these systems have outstanding chemical resistance to most solvents, acids, alkalis, hot oils and animal by-products. The CastorCrete RT-B system features a colored quartz broadcast finish in a single solid color or silica sand medium and is grout coated and top coated with a variety of products depending on the end use environment. This system is typically installed at $\frac{3}{16}$ inch (4.8 mm) to $\frac{1}{4}$ inch (6.35 mm) thickness. The CastorCrete RT-CQ system is a double broadcast of preblended color quartz and is installed between $\frac{1}{4}$ inch (6.35 mm) and $\frac{5}{16}$ inch (9.5 mm). Each can be sealed with a variety of topcoats depending on environmental exposures and desired aesthetics.

Common Applications

- Pharmaceutical Manufacturing
- Food & Beverage Processing

CASTORCRETE SL SYSTEM

CastorCrete SL is a flowable urethane cement mortar installed at $\frac{1}{8}$ (3.18mm) to $\frac{1}{4}$ inch (6.35 mm) to protect concrete from physical and chemical abuse. It is very resistant to impact and abrasion, and is unaffected by animal fats and most solvents. This system has a co-efficient of thermal expansion similar to concrete, allowing it to maintain adhesion when subjected to the thermal shock of hot water. It can be used at constant service temperatures up to 200°.

CastorCrete SL can be purchased with an anti-microbial additive to inhibit the growth of bacteria and microorganisms. It is a quick-turnaround flooring solution for businesses that must minimize downtime. It is usually installed without a primer or topcoat, and can be returned to service 12-24 hours after installation. It contains no VOCs, has very little odor and is made with natural sustainable raw materials.

Common Applications

- Chemical Processing
- Food & Beverage Processing
- Paper Plants
- Waste-Water Treatment Facilities

CASTORCRETE SL-B/SL-CQ SYSTEM

CastorCrete SL-B and CastorCrete SL-CQ are medium-duty slurry urethane cement mortar systems. They are designed to protect existing concrete or resurface moderately deteriorated concrete, while also offering options for a decorative appearance and/or slip resistance with the use of broadcast quartz or silica sand. These systems can withstand aggressive physical exposure to heavy duty abrasion and impact, thermal shock, thermal cycling and medium forklift traffic.

Additionally, these systems have outstanding chemical resistance to most solvents, acids, alkalis, hot oils and animal by-products. The CastorCrete SL-B system features a colored quartz broadcast finish in a single solid color or silica sand medium and is grout coated and top coated with a variety of products depending on the end use environment. It is typically installed at $\frac{3}{16}$ inch (4.8 mm) to $\frac{1}{4}$ inch (6.35 mm) thickness. The CastorCrete SL-CQ system is a double broadcast of preblended color quartz and can be installed between $\frac{3}{16}$ inch (4.8 mm) to $\frac{1}{4}$ inch (6.35 mm). Both can be sealed with a variety of topcoats depending on environmental exposures and desired aesthetics.

Common Applications

- Pharmaceutical Manufacturing
- Food & Beverage Processing

CASTORCRETE TG SYSTEM

CastorCrete TG is a heavy-duty urethane cement mortar. It's designed to protect existing concrete or resurface badly deteriorated concrete. It can withstand extreme physical exposure including steam cleaning, heavy traffic and heavy impact. This system has outstanding chemical resistance to most solvents, acids, alkalis, hot oils and animal by-products while withstanding constant temperature exposures up to 250°. This system is typically installed at $\frac{1}{4}$ inch (6.35 mm) to $\frac{1}{2}$ inch (12.7mm) thickness.

Common Applications

- Pharmaceutical Manufacturing
- Food & Beverage Processing

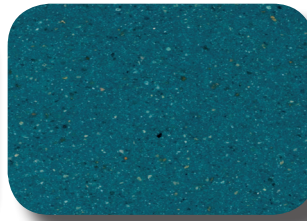
CASTORCRETE COLOR PALETTE



■ *Bronze*



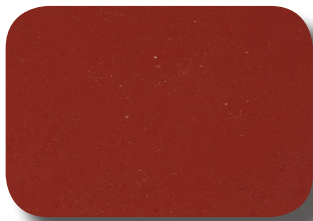
■ *Coal*



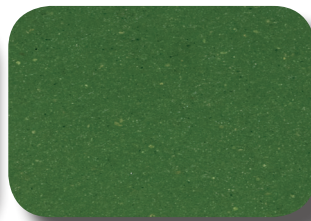
■ *Cobalt*



■ *Dark Grey*



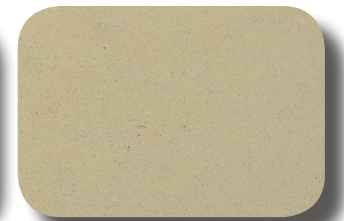
■ *Dark Red*



■ *Evergreen*



■ *Light Grey*



■ *Natural*

**A premium will be charged for Cobalt and Evergreen.*

EXPERIENCE THE CASTORCRETE DIFFERENCE FOR YOURSELF.

www.castorcrete.com